

A Visual Story

This guide has been created to help prepare you for a visit to the King Richard III Visitor Centre. If you have any extra questions, our friendly team are happy to help. Contact us on info@kriii.com or 0116 299 4444

Arriving



Find us opposite the Cathedral Gardens and the King Richard III statue.

Our entrance is a large open space with a slight slope, and glass automatic doors that open towards you when arriving.



Welcome area, tickets and gift shop

Inside there are two desks and friendly staff.



Speak to a team member to buy or check tickets and receive a map with helpful room numbers. Team members will be wearing black uniforms.



In this area you will start to hear exhibition sounds. Ear defenders are available to borrow at the front desks if they'd help you enjoy your visit.



The shop area is bright with a mix of lights and daylight

Starting the exhibition (Ground floor: History)



Here you can pick up a free activity to earn a prize.

Activities:

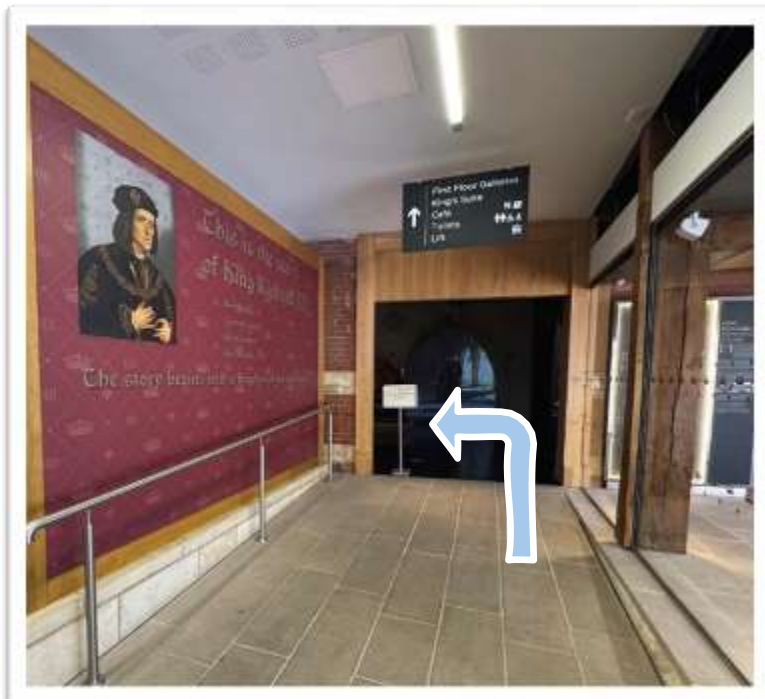
Boar hunt: our beginner activity, great for younger guests and those wanting a simple fun activity.

Quest: Two sides of puzzles, questions and drawing challenges on a clipboard.

Lost in Time game: an interactive app-based game for those with their own smart device. Available to download before arrival or using our Wi-Fi when you arrive.

<https://kriii.com/what-s-on/2022/the-rex-factor>

Entering the exhibition space



Head up the ramp and turn left to explore room 1.

Then when you hear bells, the video starts in room 2. (Pass through room 2 to get to room 1)

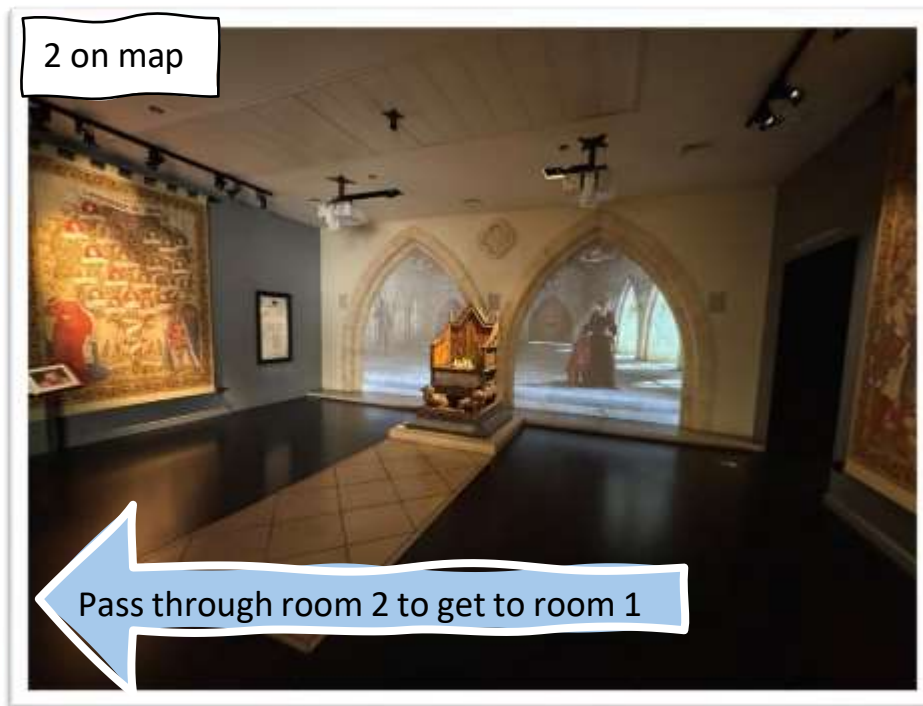


This area has loud exhibition sounds from our immersive videos.



Room 1 is light, and room 2 is dark (so you can see the video at its best)

Room 1 and 2



Seating available in room 2

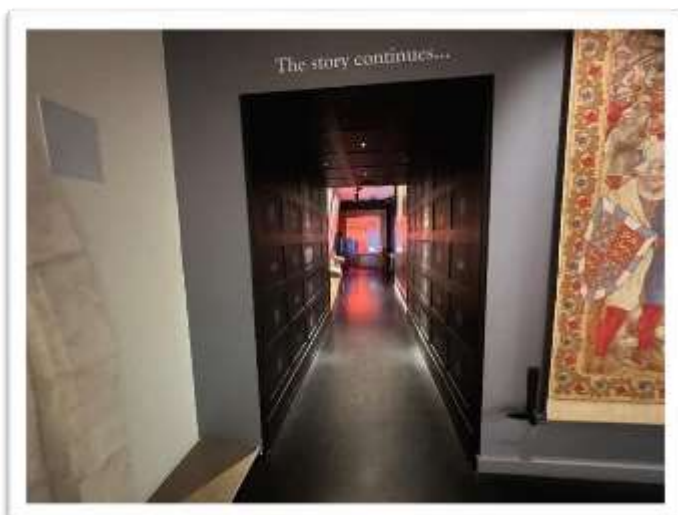


These rooms have loud sounds from our immersive videos.



Room 1 is light and room 2 is dark so you can see the video at its best

Room 3



Head through the short tunnel on the right to continue to room 3



Here you will see the accessible step free door to the grave site for after you've explored upstairs.

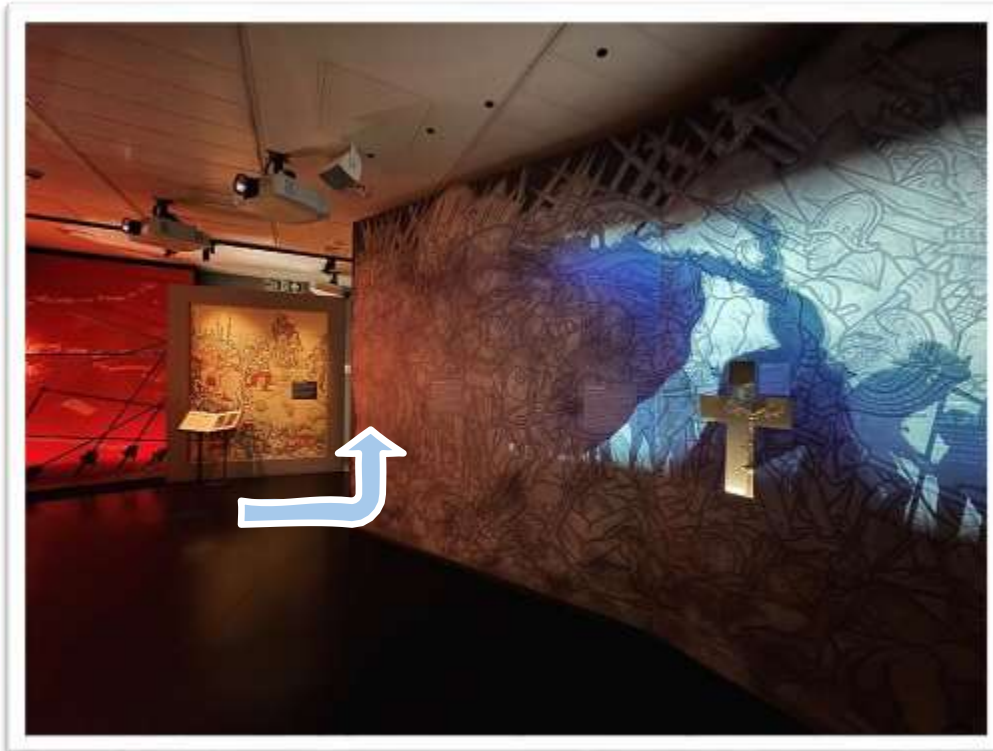


These rooms have loud sounds from the immersive videos.



This area dark with changing lights as the videos activate in sequence.

More pictures of room 3



It might be difficult to spot the next door but it's just around the corner and leads to a well-lit area.

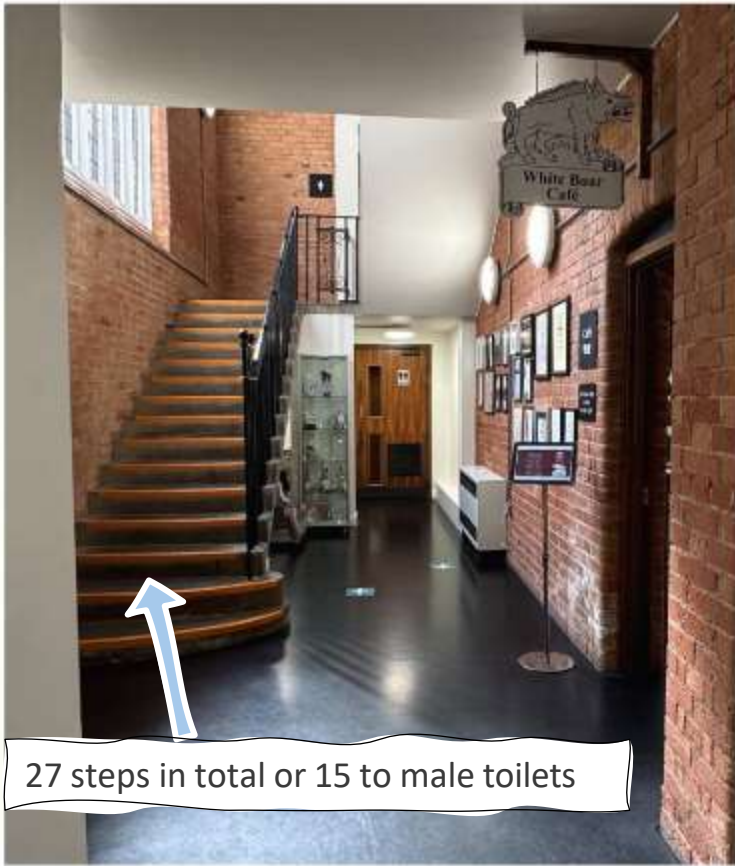


These rooms have loud sounds from the immersive videos.



This area dark with changing lights as the videos activate in sequence.

Halfway



27 steps in total or 15 to male toilets

This is the halfway point.

To your right is the “White Boar Café” with staff happy to help with any dietary queries.

Ahead are toilets and stairs to the first floor.

To your left is the lift that can only go between the two public floors.

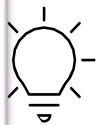
Ground floor toilets are accessed by a pull door that opens towards you and include Ladies, Accessible and Unisex. Halfway up the stairs are the Mens toilets.

Café



Here is much quieter than the first rooms.

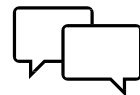
Tip: If you don't like hand dryers, the unisex toilet has paper towels instead.



This area bright with a mix of lights and daylight



The Lift/ Elevator



Tip: next to the toilet door are busts - 3d models of heads.

Toilets

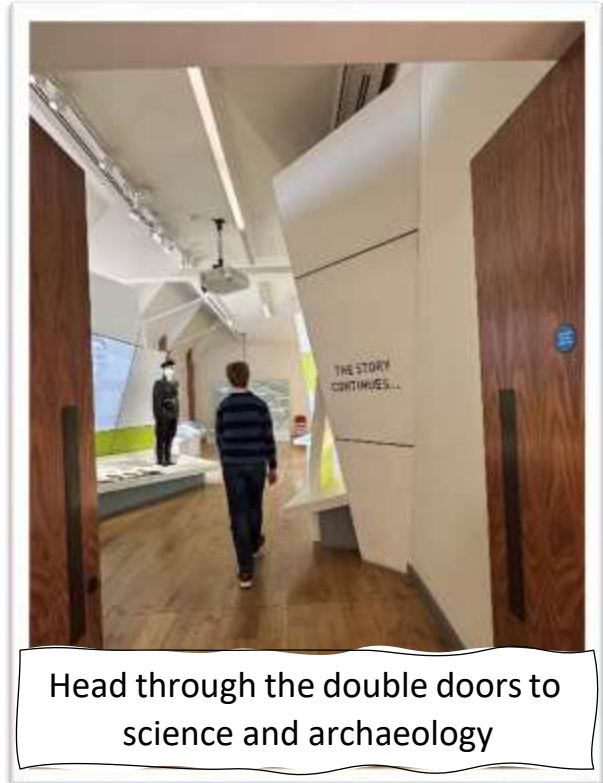


Courtyard



The courtyard is accessible from the café and the Link space (see map) with no stairs. These push and pull glass doors can be very heavy so please ask if you need help with them.

Upstairs / First Floor (Science and discovery)



Upstairs you will often find a knowledgeable volunteer to explain things. They will be wearing a volunteer badge but not a uniform.



These rooms have loud exhibition sounds



This area bright with a mix of lights and daylight



Seating available



Tip: upstairs has several mannequins and 3D models of heads/faces like these below - they do not move.





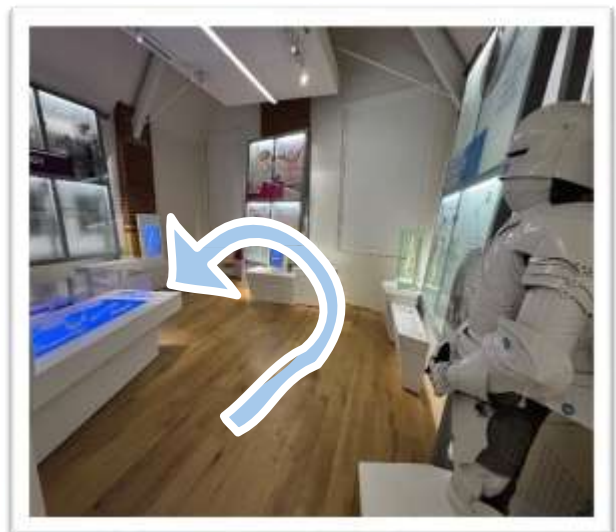
Number 6 is a window box high up on the first floor overlooking the courtyard.



These rooms have loud exhibition sounds

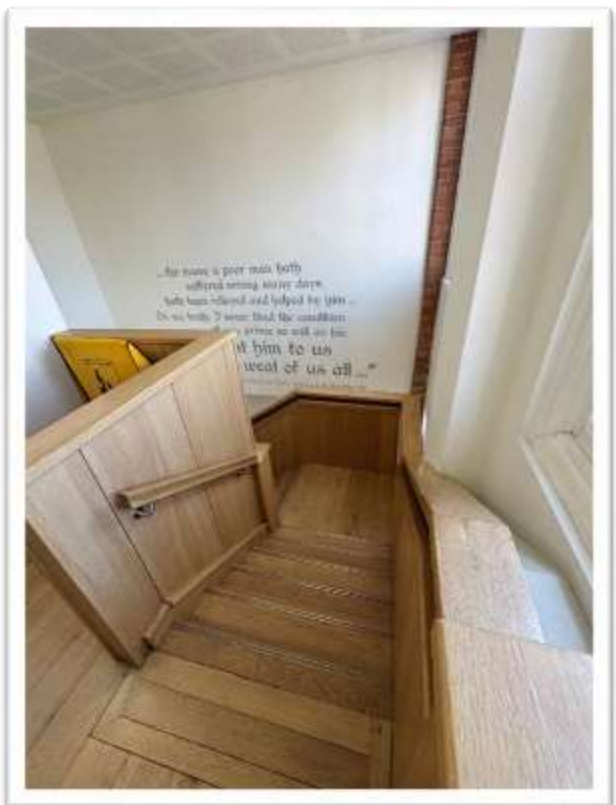


This area is bright with a mix of lights and daylight



Seating available

Next you go down the wooden stairs, (27 steps with handrails on both sides), or return to the lift and use the accessible door to visit the grave site.



Link space and Grave site



After the stairs you arrive in the Link space and can head through the far door to visit the Grave site.



This is a much quieter area with no video, just audio



This area is bright with lights and daylight



Seating available

The Gravesite



Inside the gravesite is a glass floor and a projected skeleton showing you where King Richard III was found. It is safe to walk on the glass.

There is also a friendly volunteer to explain what you are seeing.



Seating available



To finish your visit, head through this archway back to the shop and reception area.

Thank you for planning a visit and if you need any other information please get in touch

0116 2994444 / info@visitleicester.info